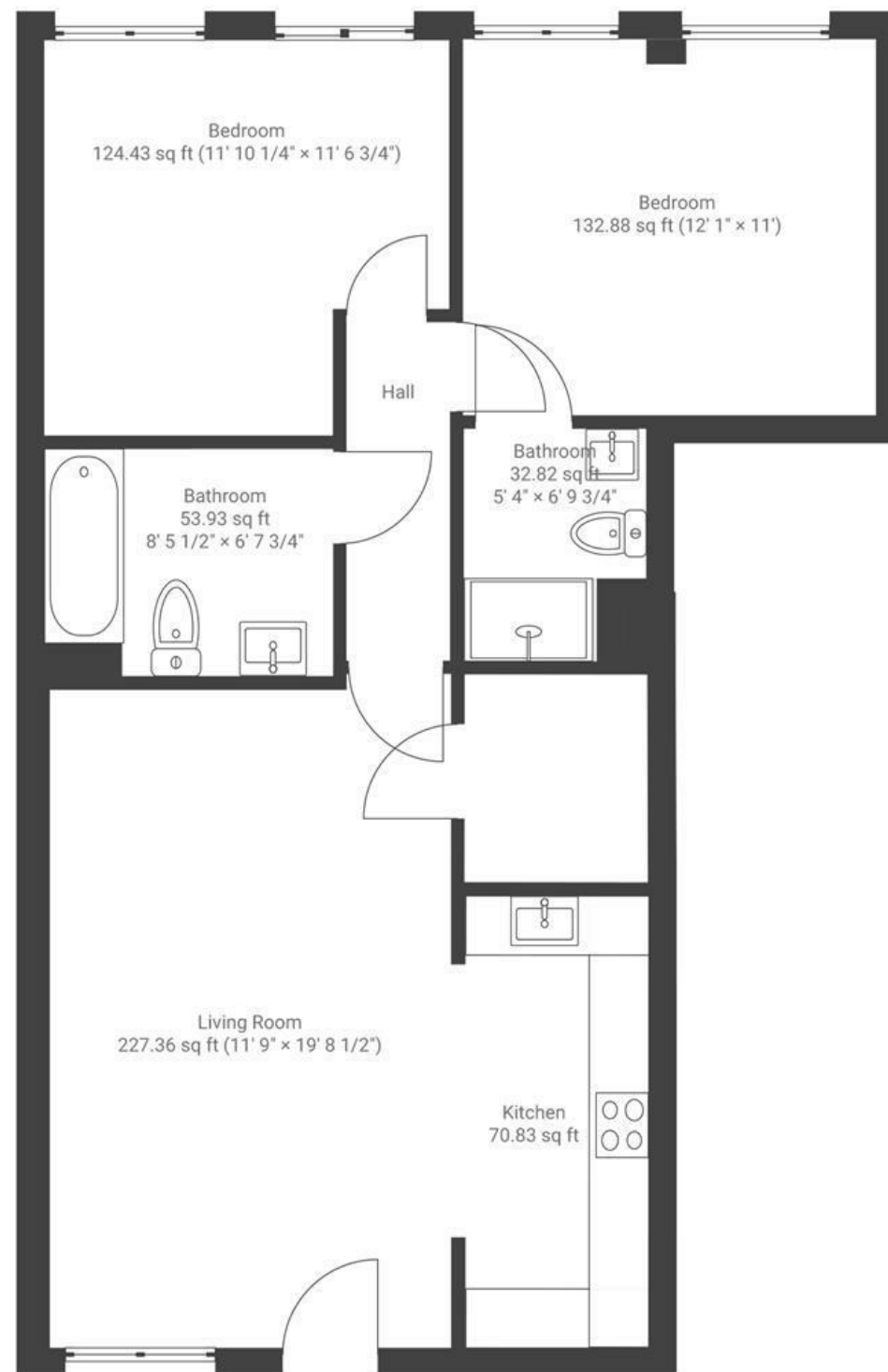


The Boot Factory

ST GEORGE

APPROXIMATE FLOOR AREA
69.7 SQM / 750 SQFT



Boardwalk

Beaconsfield

ST GEORGE, BRISTOL



£300,000



BS5 8FB



2 Bedrooms



2 Bathrooms

I've been incredibly fortunate to call The Boot Factory my first home. The welcoming courtyard layout facilitates a warm community spirit, something I found invaluable having moved in a week before lockdown in 2020! When I first viewed the site plans in 2019, Flat 7 immediately caught my attention; ticking all boxes on my wish list: two equal-sized double bedrooms, two bathrooms, and secure allocated parking. Whilst I use my car for work, almost everything you need is just a short walk away.

